



Kansallinen semanttisen webin tietoinfrastruktuuri ja sen sovellukset

Eero Hyvönen, Prof., Director

Aalto University and University of Helsinki
HELDIG – Helsinki Centre for Digital Humanities
Semantic Computing Research Group (SeCo)

Thanks to All
Members of SeCo (16)
SeCo Alumni and Visitors (57)
and Collaborators (many)!

2001-2021

450 articles & other publications

SeCo People

[How to visit us?](#)



[Eero Hyvönen](#)
Professor, Director



[Senka Drobac](#)
Postdoctoral Researcher



[Matias Frosterus](#)



[Esko Ikkala](#)
Doctoral Candidate



[Joonas Kesäniemi](#)
Doctoral Candidate



[Mikko Koho](#)
Staff Scientist



[Matti La Mela](#)
Postdoctoral Researcher



[Rafael Leal](#)
Doctoral Candidate



[Petri Leskinen](#)
Doctoral Candidate



[Eetu Mäkelä](#)
Visiting Researcher, Professor



[Arttu Oksanen](#)
Doctoral Candidate



[Eijas Oksanen](#)
University Researcher



[Heikki Rantala](#)
Doctoral Candidate



[Laura Sinikallio](#)
Research Assistant



[Minna Tamper](#)
Doctoral Candidate



[Jouni Tuominen](#)
Staff Scientist

SeCo Alumni & Visitors

Rami Aamulehto
Babatunde Anafi
Lia Gasbarra
Markus Holli
[Tomi Kauppinen](#)
Tuomas Korpilahti
Jussi Kurki
Nina Laurence
Robin Lindroos
Katarina Nyberg
[Sisko Pajari](#)
Ville Piiparinen
Tuukka Ruotsalo
Sami Sarsa
Reetta Sinkkilä
Joeli Takala
Onni Valkeapää
[Kim Viljanen](#)
Mika Wahlroos
Mark van Assem

Eeva Ahonen
Kasper Apajalahti
Mikko Haaramo
Jouni Hyvönen
Suvi Kettula
Alex Kourijoki
Teppo Kansälä
Aleksi Lindblad
Glaucio Mantegari
Antti-Jussi Nygård
Tuomas Palonen
Kimmo Puputti
Samppa Saarela
Satu Savia
Avril Styrman
Antti Tani
Arttu Valo
Mikko Virkkilä
Henri Ylikotila

Olli Alm
Mikko Apiola
Pejam Hassanzadeh
Thomas Häggström
Ville-Pekka Komulainen
Heini Kuittinen
Joonas Laitio
Petri Lindgren
[Goki Miyakita](#)
Jyrki Orskari
Markus Palviainen
Vilho Raatikka
Mirva Salminen
Katri Seppälä
[Osma Suominen](#)
Seppo Törmä
Anne Varis
Nam Vu Hoang
Anu Ylisalmi

Miika Alonen
Jérémie Dutruit
Erkki Heino
Miikka Junnila
Aleksandra Konovalova
Johannes Kupiainen
Mikko Laukkanen
Thea Lindquist
Jouni Mäkeläinen
Panu Paakkariainen
Sini Pessala
Mikko Rinne
Mikko Salonoja
Teemu Sidoroff
Ahti Syreeni
Juha Törnroos
Antti Vehviläinen
Jari Vaatänen
Sampo Yrjänäinen



Latest News

[Five new SeCo papers accepted for the ISWC 2021](#)
The 20th International Semantic Web Conference (ISWC 2021), the...
2.8.2021 6:53 by eahyvene

[FindSampo ? Finnish Archaeological Finds on the Semantic Web](#)
FindSampo – Finnish Archaeological Finds on the Semantic Web, a...
19.5.2021 20:00 by eahyvene

[In/Tangible European Heritage: New EU project starting in SeCo](#)
The idea of the new 3-year project is to study how intangible cultural...
6.8.2020 8:57 by eahyvene

Latest Publications

Rafael Leal, Joonas Kesäniemi, Mikko Koho and Eero Hyvönen: [Relevance Feedback Search Based on Automatic Annotation and Classification of Texts](#)

Eero Hyvönen: [How to Create a National Cross-domain Ontology and Linked Data Infrastructure and Use It on the Semantic Web](#)

Eero Hyvönen, Esko Ikkala, Mikko Koho, Jouni Tuominen, Toby Burrows, Lynn Ransom, and Hanno Wijsman: [Mapping Manuscript Migrations on the Semantic Web: A Semantic Portal and Linked Open Data Service for Premodern Manuscript Research](#)

Toby Burrows, Laura Cleaver, Doug Emery, Eero Hyvönen, Mikko Koho, Lynn Ransom, Emma Thomson and Hanno Wijsman: [Medieval manuscripts and their migrations: Using SPARQL to investigate the research potential of an aggregated Knowledge Graph](#)

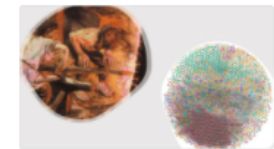
SeCo on Twitter

Tweets by @secoresearch

[Semantic Computing Research Group](#) @secoresearch
Avoin kutsu juhlaseminaariin:

SEMANTTINEN WEB SUOMESSA 20 VUOTTA
Tiistaina 2.11.2021, 13:00–17:00 (CET)
12:00-16:00
seco.cs.aalto.fi/events/2021/20...

Tervetuloa!@HelsinkiIDH #@HelsinkiIDH @AaltoUniversity @CSAalto @helsinkiuni



Oct 12, 2021

[Semantic Computing Research Group](#) Retweeted

Embed View on Twitter

SeCo on Facebook

[Semantic Computing ...](#)



2.11.2001



Thanks to collaborators:

- W3C
- HIIT
- Suomen Tekoälyseura ry
- XML Finland ry
- Elisa Oyj



Semantic Web Kick-Off in Finland
Vision, Technologies, Research, and Applications

Eero Hyvönen (editor)

May 19, 2002

HIIT
Publications
2002-01



UNIVERSITY OF HELSINKI

Department of Computer Science
Faculty of Science

This page might not be updated



Department of Computer Science

Department information

Homepage

News and events

Research

Studies

Admission

Computing facilities

Administration

Quality manual

Contact information



Helsingin yliopisto - Tietojenkäsittelytieteen laitos

[Koti](#) [Yhteystiedot](#) [Laitos lyhyesti](#) [Henkilöt](#) [Palvelut](#) [Opiskelu](#) [Tutkimus](#)
[Uutiset ja tapahtumat](#)

SEMANTIC WEB KICK- OFF IN FINLAND - ÄLYKÄS WWW SUOMESSA



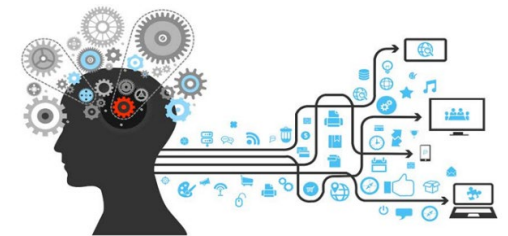
Helsingin yliopisto, Porthania, sali P3

Perjantai 2.11.2001, klo 9:00-16:30

Miten WWW tulee älykkääksi ja viisaaksi?



- Samalla tavalla kuin mekin koulussa!
- **Tiedon avulla ("semanttinen" data)**
Kerrotaan verkolle maailmasta oppilaan (verkon) ymmärtämällä tavalla!
 - Web of Data: Ontologies, Linked Data, Knowledge Graphs
- **Älykyyden avulla (algoritmit)**
Ohjelmoidaan oppilas (WWW) oppimaan ja ratkomaan ongelmia itse!
 - Natural Language Understanding, Machine Learning, Knowledge Discovery, Artificial Intelligence, ...

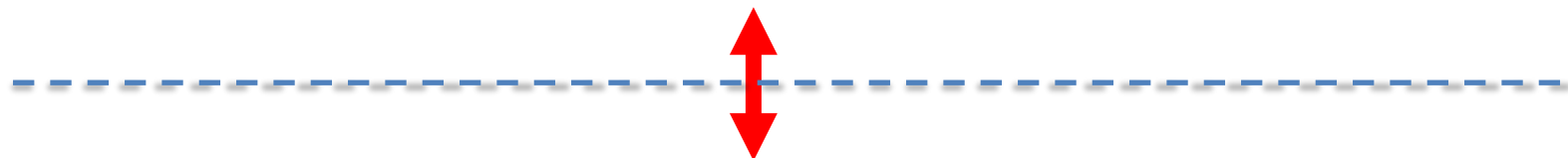
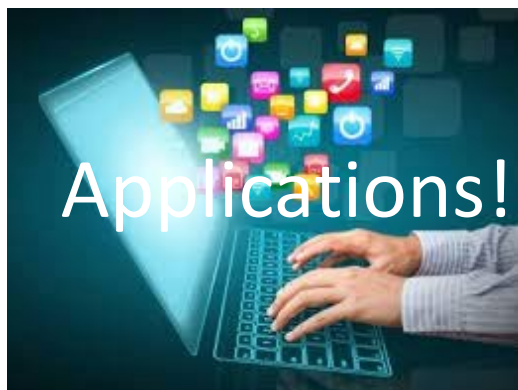




Mitä tarttis tehrä?



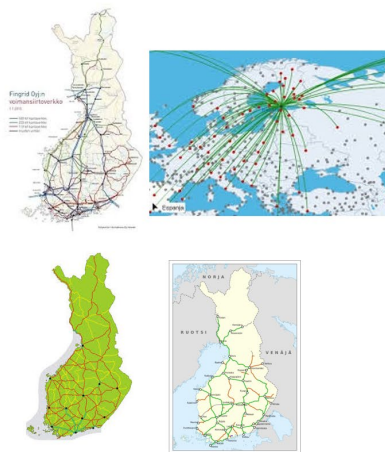
2



Semantic Data Infrastructure!

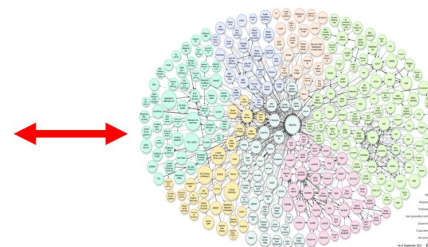
Traditional Infras:

(rail)roads, electricity, ...



Semantic Content Infra:

Ontologies, linked data, metadata, ...



1



Why infrastructure?

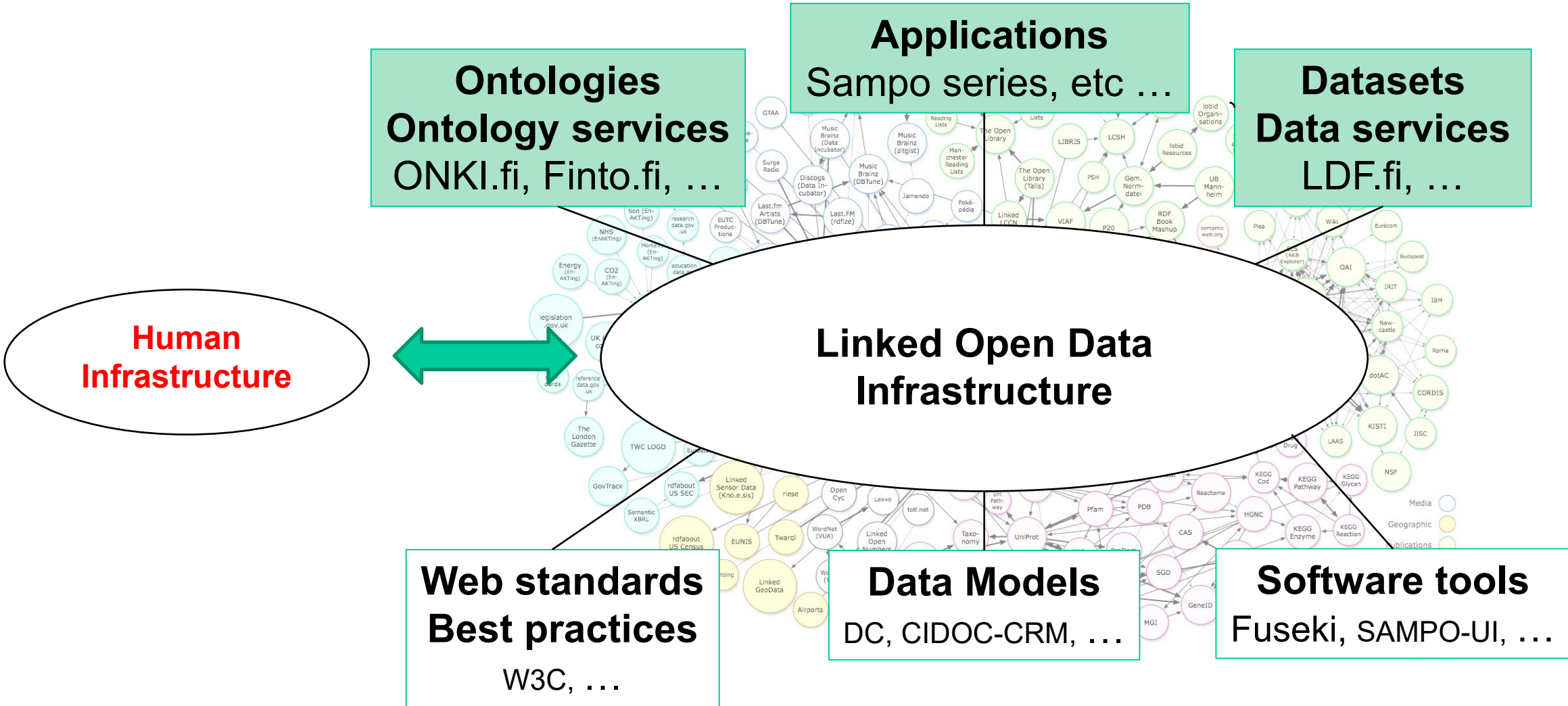
”Intellectuals solve problems
- geniuses prevent them”

Albert Einstein



Linked Open Data Finland:

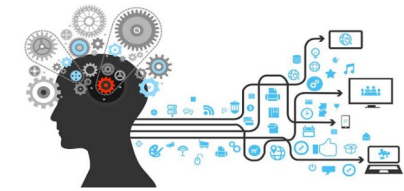
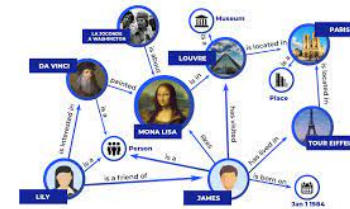
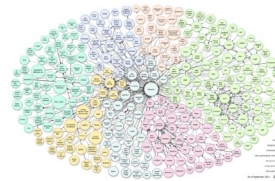
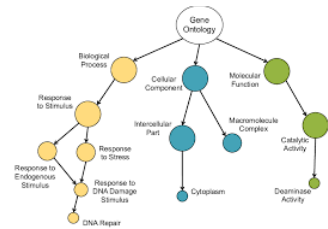
Elements of a National Linked Data Infrastructure



Semanttisen webin kehitysvaiheita Suomessa Aalto-yliopistossa ja Helsingin yliopistossa



Focus: Idea Ontologies Linked Data Knowledge Graphs AI Metaversum



1989

2001

2010

2021

2030



Semantic Web
Kick-off
in Finland



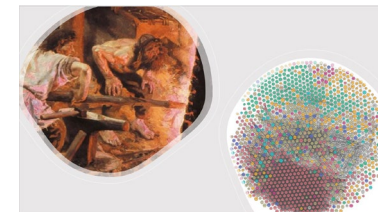
Developing the Digital World Together
HELDIG
Helsinki Centre for Digital Humanities



Linked Data Finland
Sampos



SUOMEN AKATEMIA
FINLANDS AKADEMI
ACADEMY OF FINLAND



Ontologiat: FinnONTO-infrastrukturi



Museot



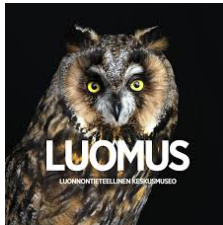
Kirjastot



Terveys



Biologia



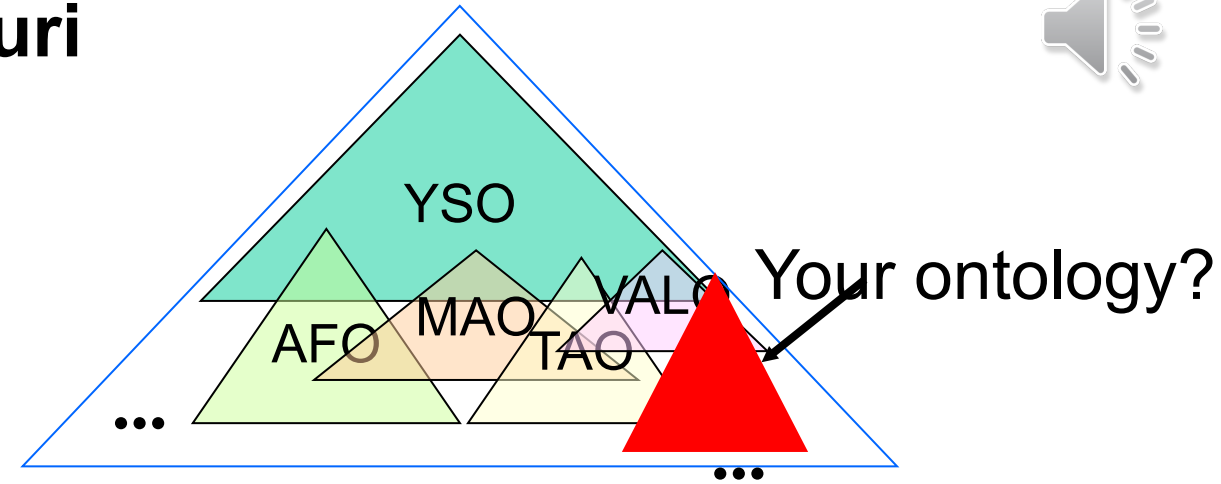
Elinkeinoelämä



Paikkatieto



...



KOKO

	Name	Ontology domain	Underlying thesaurus	Size	Maintaining Organization
1	YSO	General domain	General Finnish Thesaurus, YSA, Allärs	23700	National Library, Åbo Academy
2	MUSO	Music	Thesaurus of Music, MUSA/CILLA	1000	National Library
3	MAO	Museum domain	Thesaurus of Museum Domain, MASA	6800	National Board of Antiquities
4	AFO	Agriculture, forestry	Agriforest Thesaurus	5500	Viikki Science Library
5	TAO	Applied arts	Thesaurus of Applied Arts	2600	University of Eastern Finland and Library of Aalto University
6	VALO	Photography	Thesaurus of Photography Literature, Thesaurus of Photography Technology	1900	Finnish Museum of Photography
7	MERO	Seafaring, shipping	Thesaurus of Seafaring	1400	Finnish Transport Agency
8	KAUNO	Literature subjects	Thesaurus of Literature, Bella	4900	Finnish Public Libraries, Kirjastot.fi
9	JUHO	Public government	Thesaurus of Finnish Government, VNAS	6400	Ministry of Finance
10	TERO	Health promotion	YSA, TESA, MeSH, Stameta	22000	Various organizations
11	KITO	Literature research	Thesaurus of Literature Research	900	Finnish Literature Society
12	KULO	Culture research	Thesaurus for Folk Culture Studies	1600	Finnish Literature Society
13	KTO	Linguistics	Thesaurus of Linguistics	1000	Research Institute for the Languages in
14	PUHO	Defense	Thesaurus of Defence Administration	2000	Finnish Defence Forces
15	POIO	Points of interest	TGN, Geonames, LDG, SUO	4600	Various organizations
	TOTAL			86300	

**FinnONTO Funding Community:
50 Organizations**



KANSALLISKIT...



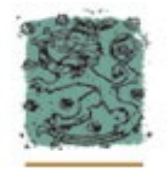
Kansanterveyslaitos
Folkhälsoinstitutet
National Public Health Institute



UNIVERSITY OF HELSINKI
Viikin tiedekirjasto



ult



SUOMALAISEN KIRJALLISUUDEN SEURA

SUOMEN MAATALOUSHUSEO SARKA



Suomen valokuvataiteen museo
Finlands fotografiska museum
The Finnish Museum of Photography



TEKNILLINEN KORKEAKOULU
Viestintäteknikka



UNIVERSITY OF HELSINKI



Valtiovarainministeriö
Finansministeriet Ministry of Finance



TEKNILLINEN KORKEAKOULU
Kartografia ja geoinformatiikka



Antikvaria-ryhmä



VALTION TAIDEMUSEO



SanomaWSOY



HELSINGIN KAUPUNGINKIRJASTO
HELSINGFORS STADSBIBLIOTEK
HELSINKI CITY LIBRARY

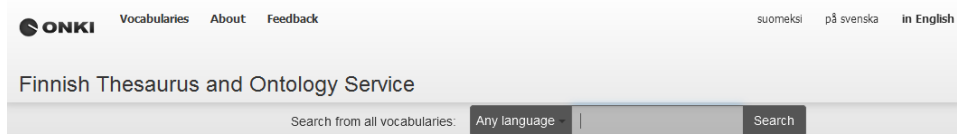
Ontologiapalvelut: ONKI.fi (2008) -> finto.fi (2014)



Permanent free national service funded by Finnish ministries

2019: 32 million API calls
2020: 2,1 million page visits
2020: 12% increase in use

ONKI.fi

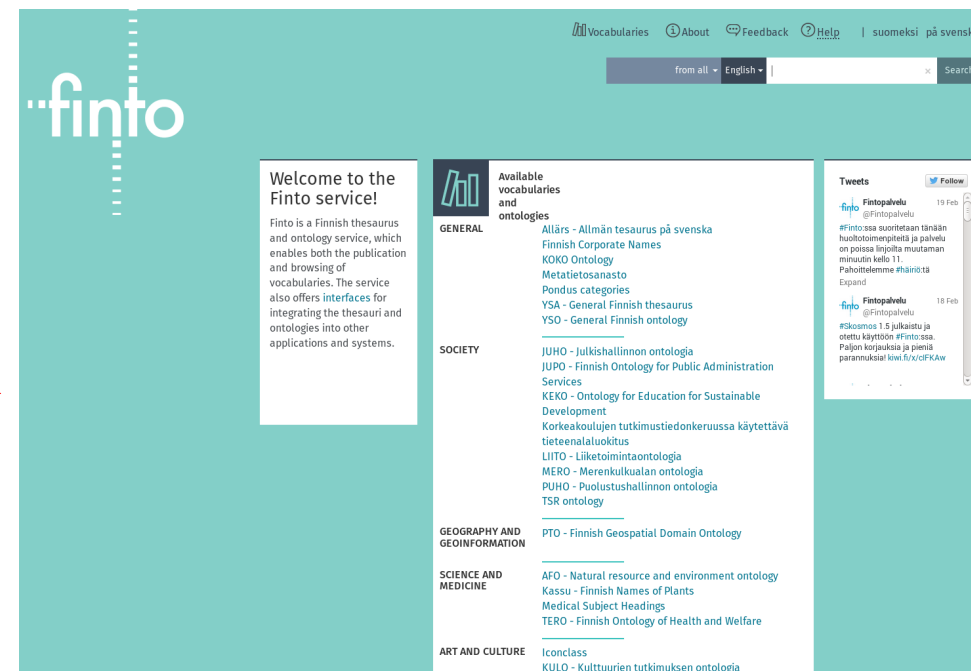


Available vocabularies and ontologies

- General**
 - General Finnish thesaurus
- concepts**
 - General Finnish upper ontology
 - KOKO Ontology
 - Allmän tesauros på svenska - Allärs
 - AFO Ontology
 - Ontology of Applied Arts - TAO
 - Ontology for Museum Domain
 - Library of Congress Subject Headings - LCSH
- Health**
 - Finnish Ontology of Health and Welfare
- Culture**
 - Kaunokki Ontology
 - The Finnish Ontology of Photography VALO
 - Kulttuurien tutkimuksen ontologia - KULO
 - Finnish Music Thesaurus - MUSA/CILLA
 - Kielitieteen ontologia - KTO
 - Kirjallisuudentutkimuksen ontologia - KITO
- Public Administration**
 - Puolustushallinnon ontologia - PUHO
 - Julkishallinnon ontologia - JUHO
 - Kunnat 2011
 - Julkisten palveluiden ontologia JUPO
 - Schools Online Thesaurus (ScOT)
- Business**
 - Merenkulkualan ontologia - MERO
- Science**
 - Kassu - Kasvien suomenkieliset nimet



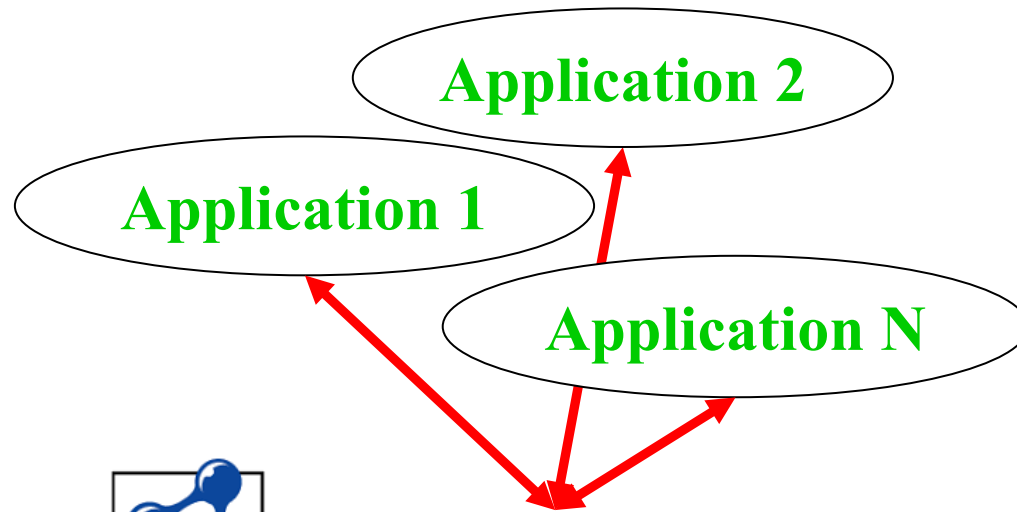
finto.fi



Datasets & Data Services: Linked Data Finland LDF.fi (2014)



Client Side
(Browser)



SPARQL End Point

Server Side
<https://ldf.fi>



Tools for research

Google Colab, Jupyter, YASGUI, etc.

Web services, portals

Linked Data Finland
Living Laboratory Data Service for the Semantic Web

This site is the Living Laboratory of the [Linked Data Finland](#) research initiative, conducted by the [Semantic Computing Research Group](#) at [Aalto University](#) in collaboration with University of Helsinki and a large consortium of Finnish public organizations and companies.

Our goal is to make life easier for both publishers as well as consumers of structured data on the Web. We base our work on the [Linked Data](#) paradigm and stack of standards, which combines an expressive, semantic data model (RDF) with standardized access mechanisms ([SPARQL](#) and [live HTTP URIs](#)).

5-star Linked Data

The baseline of our work is the [5-star Linked Data model](#), proposed [originally](#) by Tim Berners-Lee.

- ★ Make data available on the Web in whatever format.
- ★★ Make data available as structured data (e.g., Excel instead of an image scan of a table).
- ★★★ Use non-proprietary formats (e.g., CSV instead of Excel format).
- ★★★★ Use URIs to denote things, so that people can point at your data.
- ★★★★★ Link your data to other data to provide context.

7-star Linked Data Service

However, in our opinion, providing 5-star Linked Data is just the beginning. To actually make use of the datasets, consumers need more support in getting to know and access them, as well as a better grasp of their quality and provenance. To this end, we extend the model with two additional stars.



Sovellukset

Sammon taontaa semanttisessa webissä

Sampo-sarja

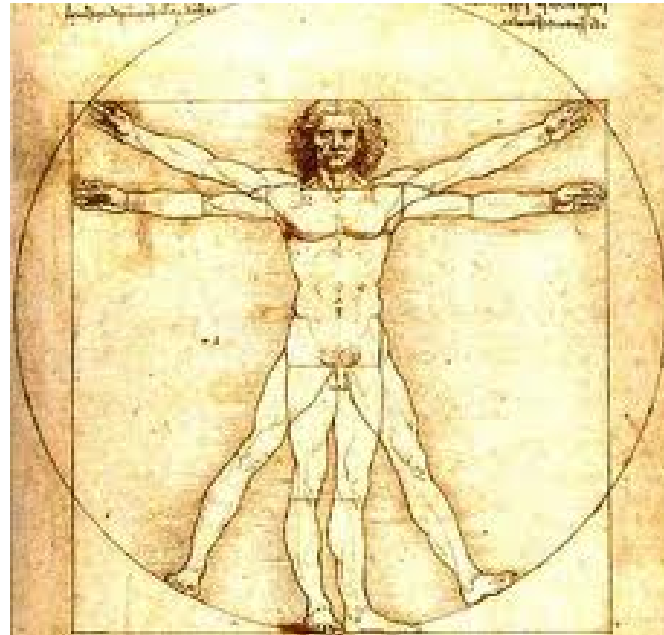
- Linked Data -palvelut
- Semanttiset portaalit



Lesson Learned in Application Development: This Technology Can Be Applied Virtually Everywhere!



- Cultural Heritage
- Archaeology
- Manuscripts
- Epistolary data
- Folklore
- Media
- Government
- Legislation
- Parliamentary Studies
- Science
- History
- Learning
- Industry
- Defence
- ...



Applications: Cultural Heritage

”Sampos” on the Semantic Web 2004-

1. **MuseumFinland** – Finnish Museums on the Semantic Web (2004) [39 000 users]
2. **CultureSampo** – Finnish Culture on the Semantic Web (2008) [107 000 users]
3. **TravelSampo** – Mobile Contextualized Services of Cultural Tourism (2011)
4. **BookSampo** – Finnish Fiction Literature on the Semantic Web (2011) [2 million users in 2020]
5. **WW1LOD** – World War I Linked Open Data (2014)
6. **WarSampo** – Finnish World War 2 on the Semantic Web (2015-19) [857 000 users]
7. **Norssi Alumni on the Semantic Web** – Historical person registry using LOD (2017)
8. **U.S. Congress Prosopographer** – U.S. Congress Legislators 1789-2018
9. **BiographySampo** – Finnish Biographies on the Semantic Web (2018-20) [50 000 users]
10. **NameSampo** – Linked Data Workbench for Toponomastic Research (2019) [37 000 users]
11. **WarVictimSampo 1914-1922** – National War History [29 000 users]
12. **Mapping Manuscript Migrations (MMM)** – medieval and Renaissance manuscripts (2020) [9 100 users]
13. **AcademySampo** – Finnish Academic People 1640 – 1899 (2021) [8 200 users]
14. **FindSampo** – Archaeological Finds on the Semantic Web (2021) [3 100 users]
15. **LetterSampo, LawSampo, ParliamentSampo**, ... to be published



Defense of Sampo, Ateneum,
A. Gallen-Kallela, 1896



<https://seco.cs.aalto.fi/applications/sampo/>





More Information – Questions?

<https://seco.cs.aalto.fi/>

450 publications about the infras and their applications:

<https://seco.cs.aalto.fi/publications/>

Videos and applications:

<https://seco.cs.aalto.fi/applications/sampo/>



Semantic Computing Research Group (SeCo)

Making computers and the web more intelligent and interoperable

HOME PAGE

MISSION

NEWS

PROJECTS

EVENTS

PEOPLE

PARTNERS

CAREERS

TEACHING

CONTACT

PUBLICATIONS

APPLICATIONS

ONTOLOGIES

LINKED DATA

INFRA FOR DH

SERVICES

TOOLS

SOFTWARE

DOWNLOAD

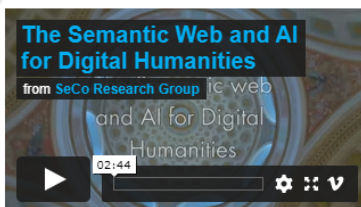
Wikipedia: *Semantic web suomeksi*

Google this site

SeCo Welcomes You!

Semantic Computing Research Group (SeCo) researches machine-processable semantics related to, e.g., the Semantic Web. We are located at the [Aalto University, School of Science, Department of Computer Science](#) and [HELDIG – Helsinki Centre for Digital Humanities](#), University of Helsinki, Faculty of Arts. Our group consists of researchers both from the Aalto University, School of Science, Department of Computer Science and [University of Helsinki, Department of Computer Science](#), and HELDIG.

Our research is [focused](#) on semantic technologies, such as the Semantic Web and intelligent web services. In addition to research and [publications](#), we also create prototype applications that demonstrate the new possibilities of semantic technologies, such as **semantic portals for end users**, **semantic infrastructural data and ontology services**, and **ontologies and tools** for creating semantic applications.



Application Domains

Our work is highly cross-disciplinary, including application domains, such as Digital Humanities, Health, Learning, Government, Commerce, Geography, and Biology.

Selected SeCo Applications and Demos for End Users



[Mapping Manuscript Migrations](#)
Online since 2020. [Try it!](#)



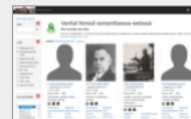
[WarVictimSampo 1914-1922](#)
Online since 2019. [Try it!](#)



[BiographySampo - Finnish Life Stories on the Semantic Web](#)
Online since 2018. [Try it!](#)



[U.S. Congress Prosopographer](#)
Online since 2018. [Try it!](#)



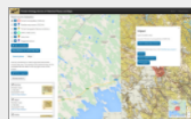
[Norssi Alumni on the Semantic Web](#)
Online since 2017. [Try it!](#)



[Semantic Finlex - Finnish Law](#)



[WarSampo - Second World War](#)



[Hipla.fi - Finnish Ontology](#)



[Semantic National Biography](#)



[BirdWatch - Mobile Semantic](#)

Latest News

[Five new SeCo papers accepted for the ISWC 2021](#)
The 20th International Semantic Web Conference (ISWC 2021), the...

2.8.2021 6:53 by eahyvone

[FindSampo ? Finnish Archaeological Finds on the Semantic Web](#)

FindSampo – Finnish Archaeological Finds on the Semantic Web, a...

19.5.2021 20:00 by eahyvone

[In/Tangible European Heritage: New EU project starting in SeCo](#)

The idea of the new 3-year project is to study how intangible cultural...

6.8.2020 8:57 by eahyvone

Latest Publications

Rafael Leal, Joonas Kesäniemi, Mikko Koho and Eero Hyvönen: [Relevance Feedback Search Based on Automatic Annotation and Classification of Texts](#)

Eero Hyvönen: [How to Create a National Cross-domain Ontology and Linked Data Infrastructure and Use It on the Semantic Web](#)

Eero Hyvönen, Esko Ikkala, Mikko Koho, Jouni Tuominen, Toby Burrows, Lynn Ransom, and Hanno Wijsman: [Mapping Manuscript Migrations on the Semantic Web: A Semantic Portal and Linked Open Data Service for Premodern Manuscript Research](#)

Petri Leskinen and Eero Hyvönen: [Reconciling and Using Historical Person Registers as Linked Open Data in the AcademySampo Knowledge Graph](#)

SeCo on Twitter

Tweets by @secoresearch

SeCo Research Group Retweeted

ManuscriptMigrations
@MSMigrations

"Harmonizing and publishing heterogeneous premodern manuscript metadata as Linked Open